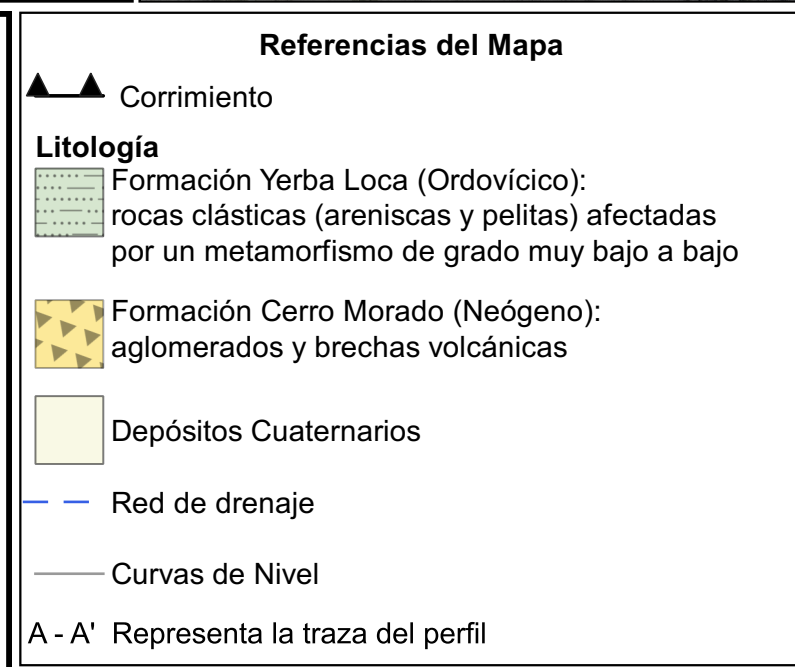


A topographic map of the Puerto del Toro area. The map shows brown contour lines indicating elevation, with labels such as 3000, 3100, 3200, 3300, 3400, 3500, 3600, and 3700. A prominent ridge runs diagonally from the upper left towards the center. To the right, there is a large, light-colored area labeled "Puerto del Toro". Several yellow-shaded regions with black triangular patterns are located along the ridges and slopes. Numerous small black dots representing elevation points are scattered across the map, many with numerical values like 59°, 53°, 59°, 19°, 20°, 30°, 51°, 20°, 15°, 64°, 55°, 37°, 18°, 35°, 59°, 36°, 57°, 58°, 18°, 57°, 21°, and 51°. Two specific locations are marked with black crosses and labeled "A" and "A'". A scale bar at the bottom left indicates distances of 0, 200, and 400 meters. UTM coordinates are visible along the edges: 6707000 and 6706000 vertically on the left; 2509000, 2510000, and 2511000 horizontally at the top and bottom. A north arrow is positioned in the upper left corner.

A geological map of the study area. The map shows a desert landscape with various geological formations. Key features labeled include 'Qda. del Puesto del Toro' with a downward arrow, 'Fm. Yerba Loca', and 'Fm. Cerro Morado'. A scale bar at the bottom indicates distances from 0 to 10 km. A north arrow is located in the top right corner.



fcefr
 Fakultät für Betriebswirtschaftslehre, Wirtschaftsinformatik und Management

Sistema de referencia de coordenadas POSGAR 94; Datum WGS 84.

2024